

Brachytherapy solutions to better serve physicians and their patients

TheraSeed[®] & AgX100[®]

Cartridges and Packaging to meet your LDR brachytherapy implant needs...

Seed Cartridges

AnchorSeed[®] Technology

- Proprietary, synthetic bio-absorbable polymer seed encapsulation design
- Developed to:
 - Improve loose seed fixity
 - Reduce misalignment
 - Minimize migration and loose seed displacement
- Sterile
- Shielded, disposable
- 15 seed capacity



C20

- Exclusive design
 - Integrated seed count indicator
 - Anti-roll surface
 - 20 seed capacity reduces cartridge changes per implant
- Sterile & non-sterile
- Shielded, disposable



Cartridge Packaging Options

TPS

- Non-sterile; sterilizable by end user
- Qty 1-8 cartridges per shielded container
- Qty 1-4 shielded containers per shipper



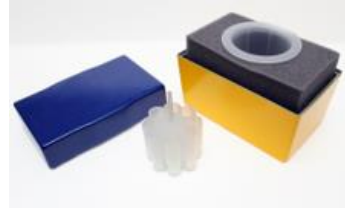
TPS Sterile

- Sterile; inner carrier suitable for sterile field
- Qty 1-8 cartridges per shielded container
- Qty 1-4 shielded containers per shipper



TPS II

- Sterile; inner carrier suitable for sterile field
- Qty 1-8 cartridges per shielded container
- Qty 1-2 shielded containers per shipper



TPS II Individual

- Sterile; individually sterilized cartridges
- Qty 1-8 cartridges per shielded container
- Qty 1-2 shielded containers per shipper
Suitable for sterile well-chamber assay



Flat-Pack

- Non-sterile; sterilizable by end user
- Qty 1-8 cartridges per shielded container
- Qty 1 shielded container per shipper



Flat-Pack Sterile

- Sterile; shielded tray suitable for sterile field
- Qty 1-8 cartridges per shielded container
- Qty 1 shielded container per shipper



C20 Seed Cartridges: available in the TPS II, TPS II Individual, and Flat-pack packaging

AnchorSeed Cartridges: available in the TPS II Individual and Flat-Pack Sterile packaging

TheraSeed and AgX100 are the foundation for all LDR brachytherapy product presentations. A manufacturer's Certificate of Calibration accompanies each order; an additional independent seed assay of 10% is available upon request.

For specific product information and Instructions for Use, please consult your Theragenics Brachytherapy Specialist or Customer Service.

Customer Service

Phone: 877-444-7333

Fax: 800-458-4303

Email: customerservice@theragenics.com

Hours of Operation: Mon - Fri, 8am - 6pm ET

Theragenics Corporation

5203 Bristol Industrial Way

Buford, Georgia 30518

USA